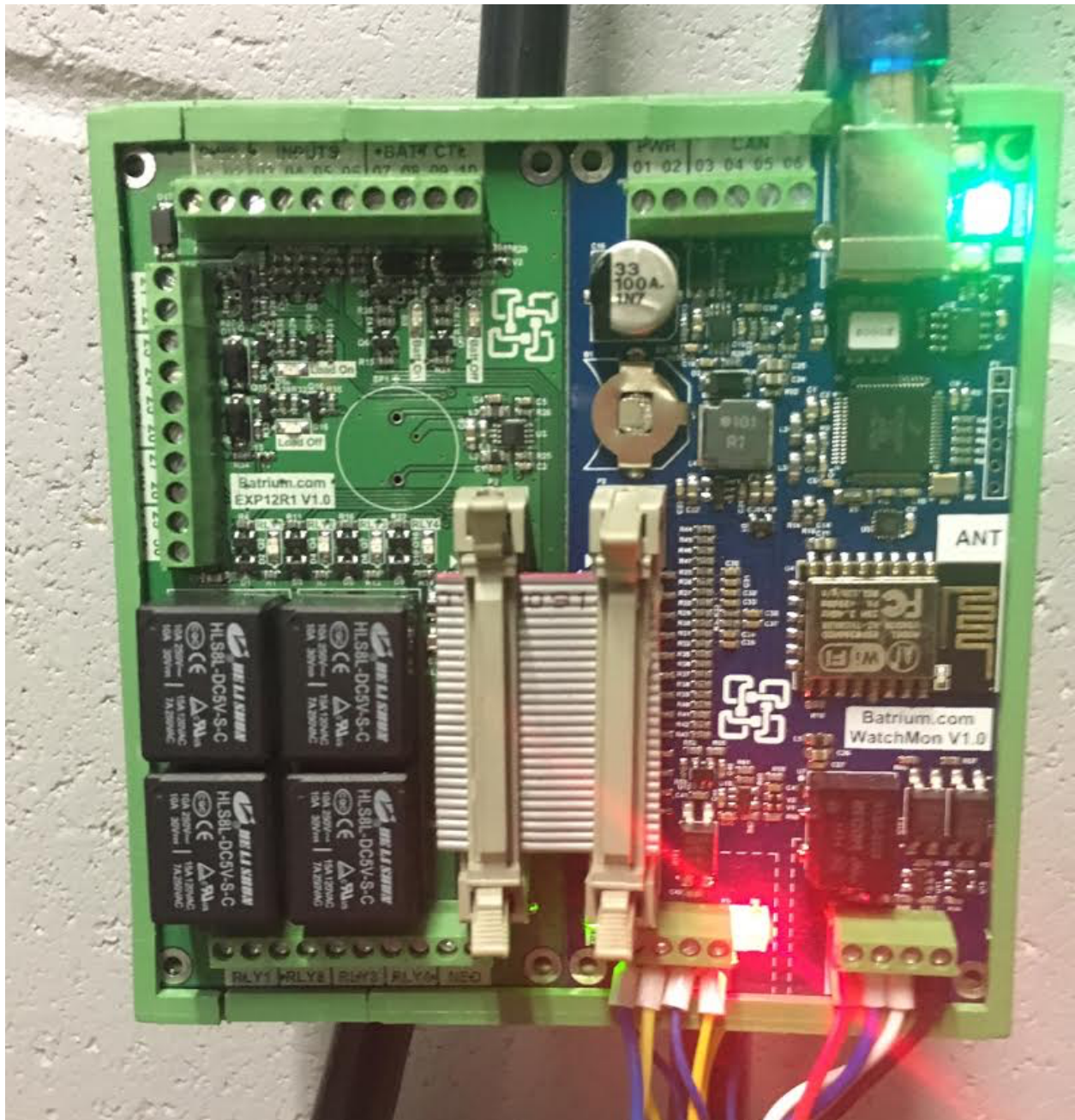


Assembly of the Watchmon / Expansion Board with the Camden Boss PCB Din Rail Holder

THIS METHOD RELATES TO WATCHMON 1 ONLY AND HAS BEEN SUPERCEDED AS PRODUCT IS NOW DELIVERED BUILT AND WITH COVERS.

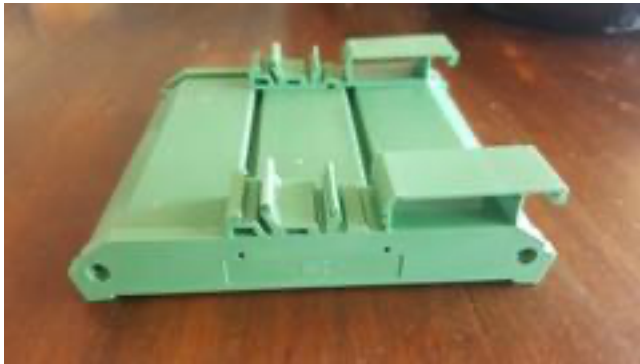
How to assemble the components into the PCB din rail holder:



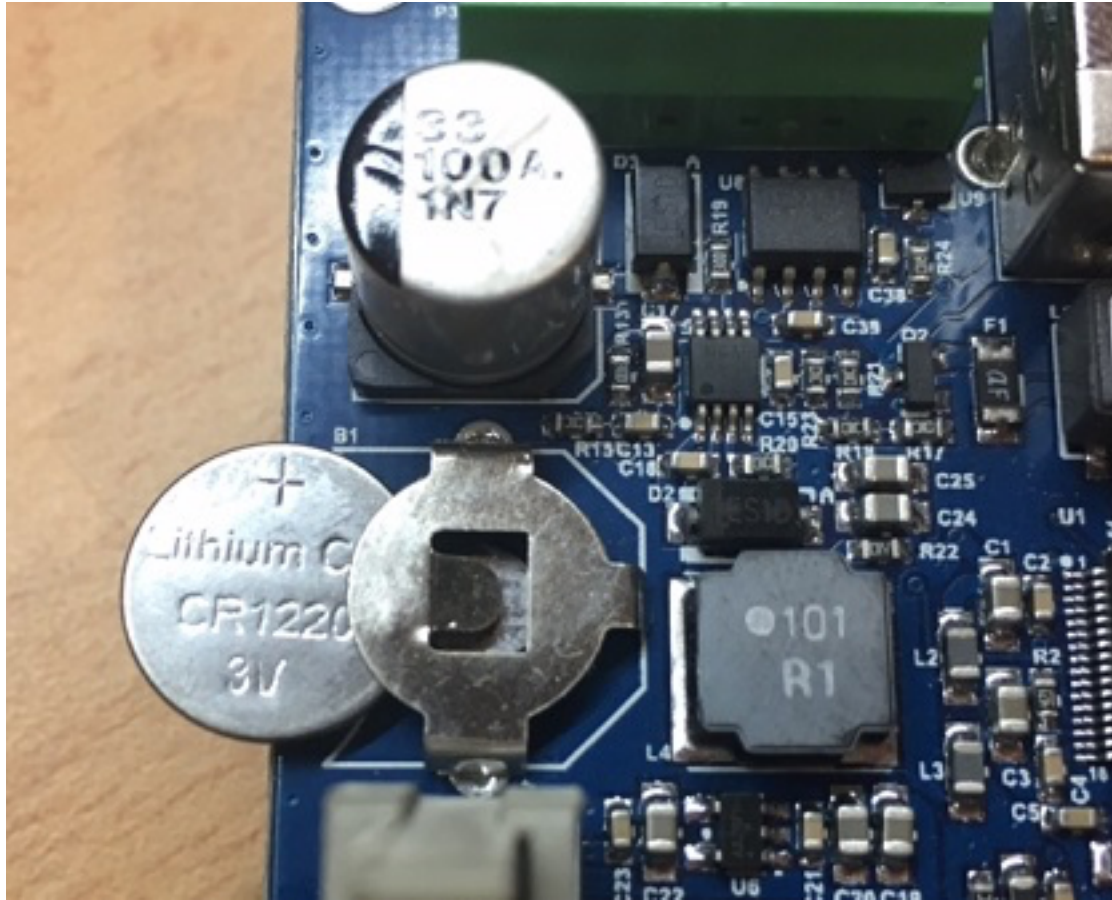
Requirements

- 1 x WatchMon supervisor
- 1 x Expansion board
- 1 x 18 mm spacers (Camden boss CIME/E/BE/1850S)
- 2 x 35 mm spacers (Camden boss CIME/E/BEF/3500S)
- 2 x end plates (Camden boss CIME/E/SE1000S)
- 1 x 26 pin IDE Ribbon link

PCB Din Rail holder assembly

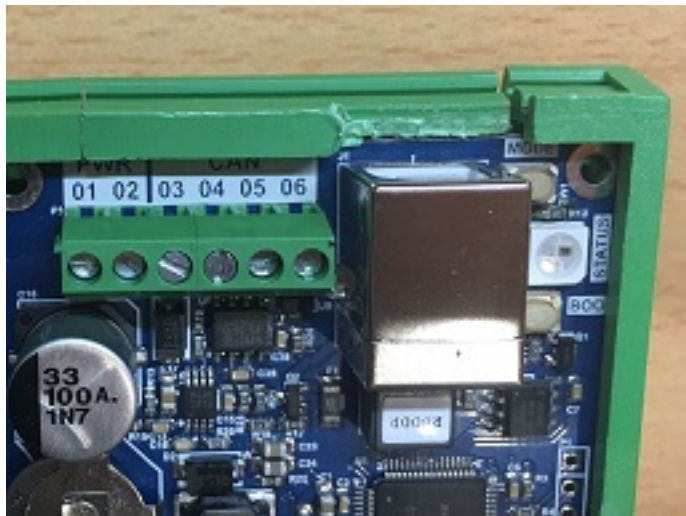
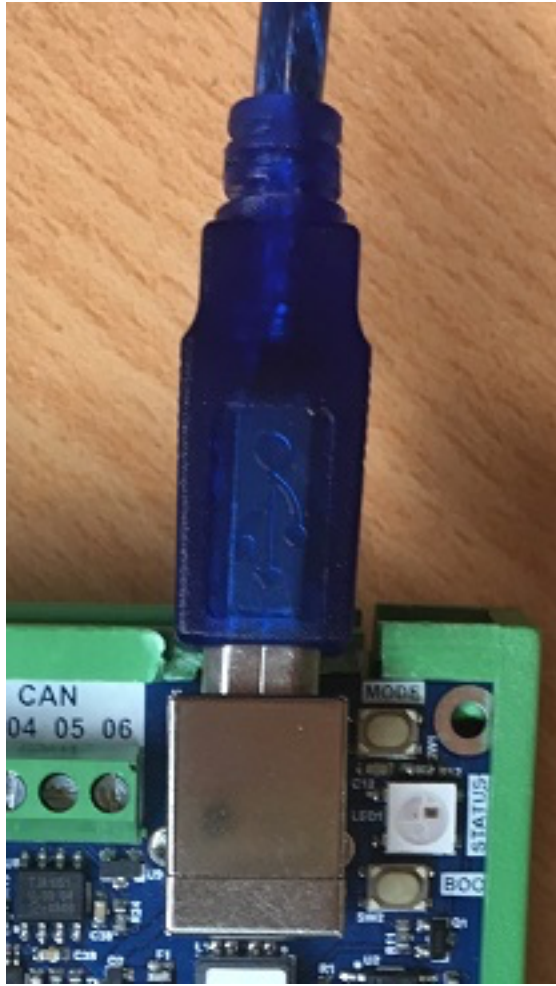


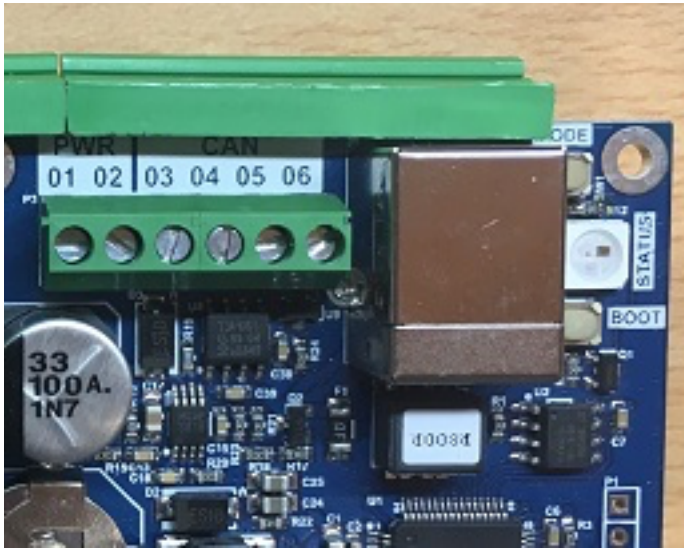
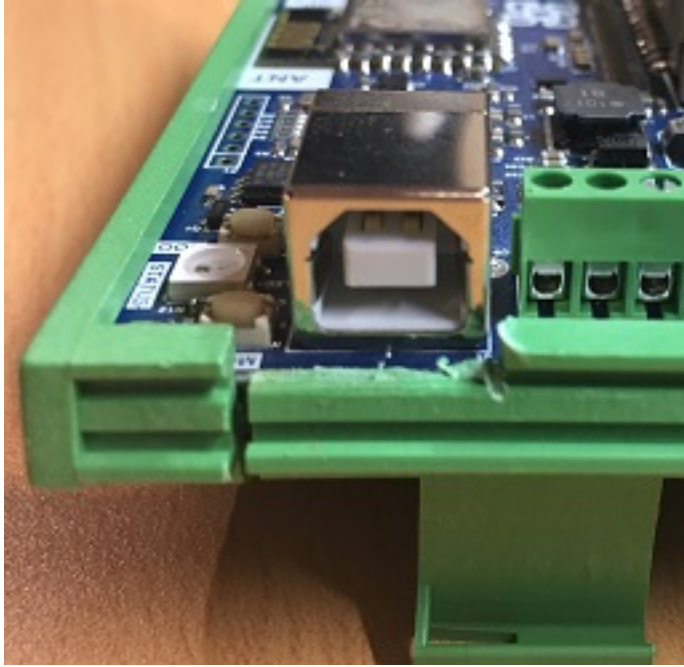
Remember to add the clock RTC battery to the WatchMon before assembling into PCB holder if it is not already present.

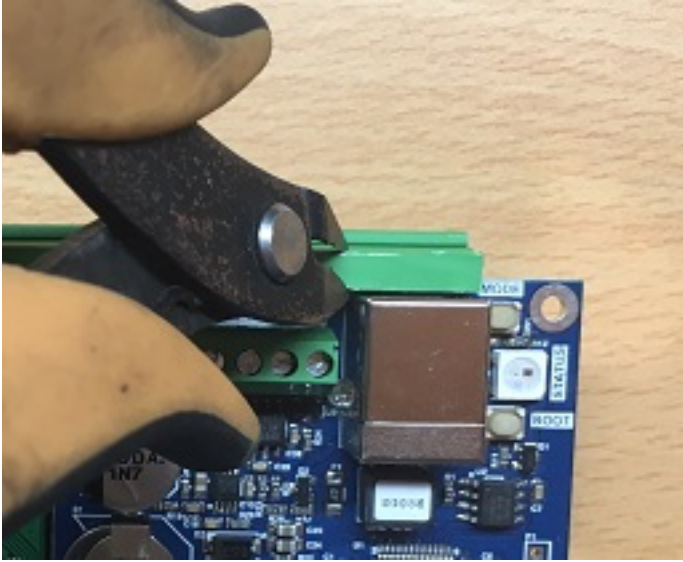


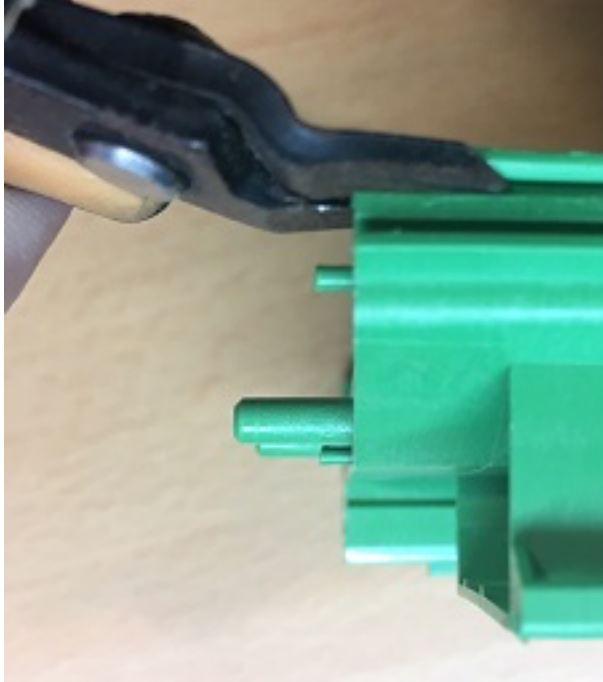
Trimming USB location

Adjust for the USB-B socket insertion.

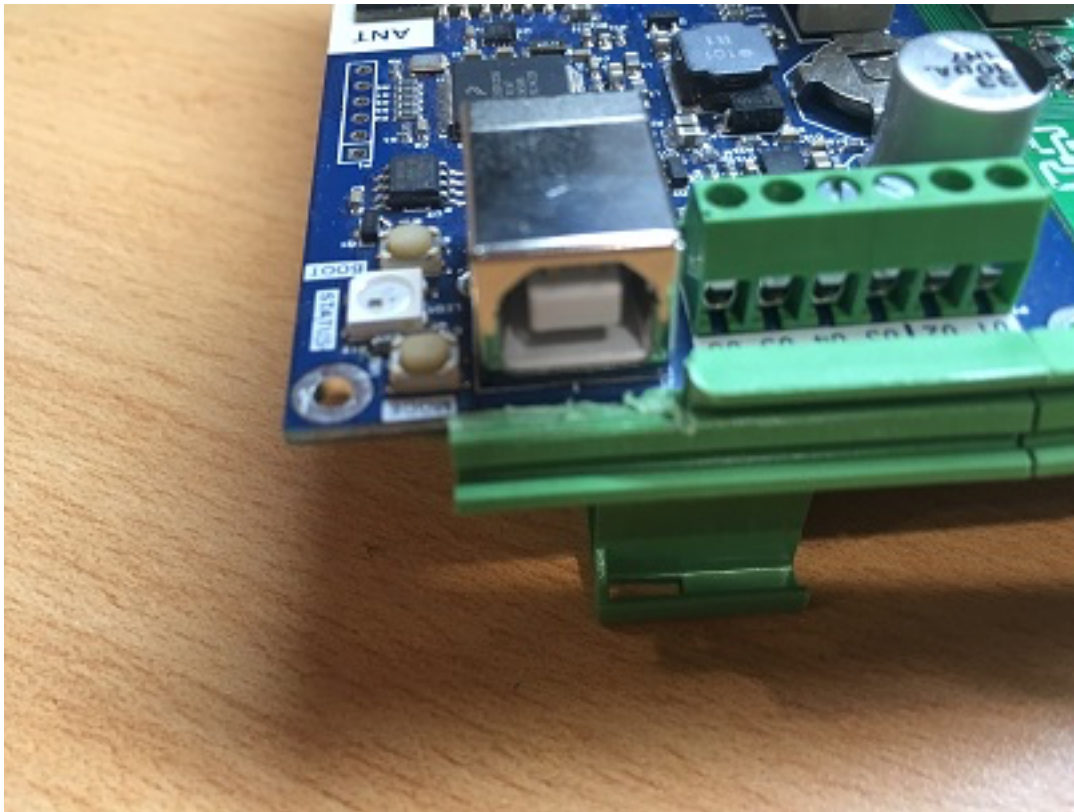




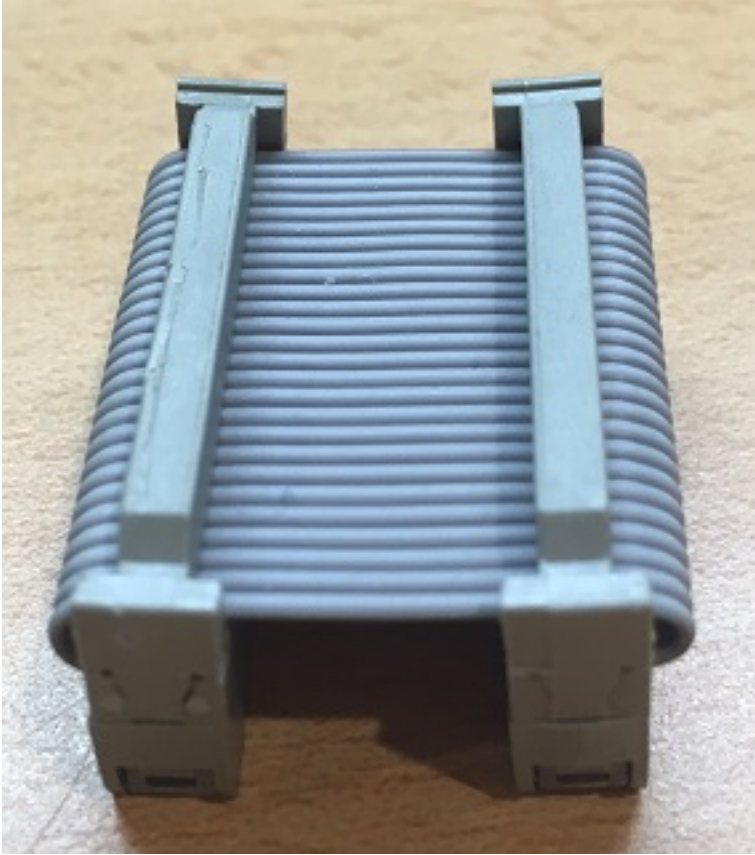


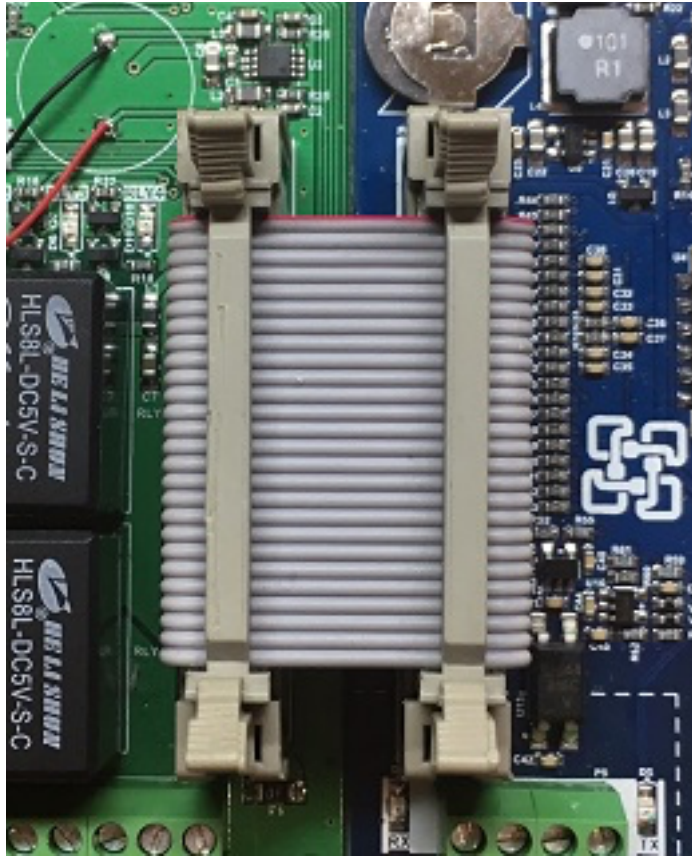


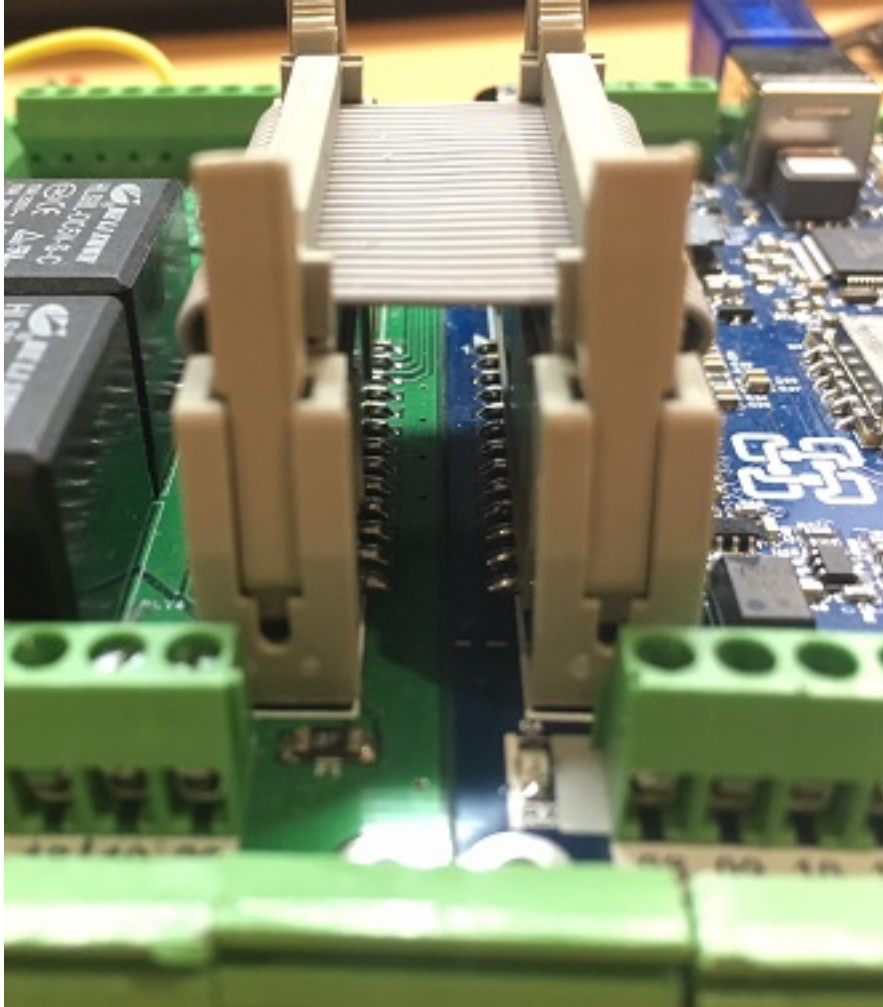
Slide PCB along the top/bottom into the holder.



Linking between WatchMon and Expansion Board







Recommendation when wiring into screw terminals

For a durable solution use bootlace / ferrule covers over all cables connected to screw terminals, raw cables have a number of draw backs. The length may need to be trimmed before insertion into 2.5 mm terminal.

- 0.5 mm 2 Crimp Cord Wire End Terminal Bootlace Ferrule Connector.





- Self-Adjustable Ratcheting Ferrule Pliers Crimper HSC 8 6-4A 0.25-6 mm² AWG 23-10.

